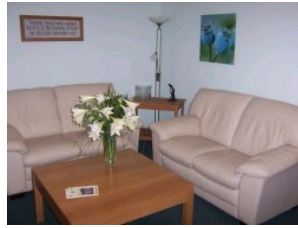


## Other Pictures

A selection of images showing some of the other areas of Martin House not covered by our 360 degree tours.



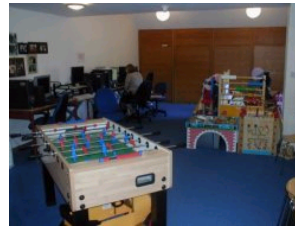
Our entrance lobby is adjacent to the reception and offices and away from the children and families.



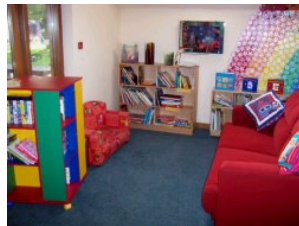
Martin House has a number of adapted vehicles to enable the children and young people to go out and about.



Situated in a corner of the garden are our swings. These include swings designed to take wheelchairs. To the rear of this area is a carved seating area.



The playroom contains computers, video games, football table and other toys and games to suit all ages of children.



Just off the main lounge and dining area is our children's library. This is a bright cheerful area with a large selection of books to suit the younger children in Martin House. The older children and young people have a resource area containing videos and DVD's.



After a long day, many families like to relax in our hot tub.

Our bathrooms are adapted to make the children's bathtime enjoyable.

The kitchen is part of our open plan dining area. Our chef caters for a range of different dietary requirements.

A 'Little Room' is available for those who wish their child to stay at the hospice following death.  
Some families choose to stay until the funeral.

This room has its own adjacent sitting room and overlooks a secluded garden which has a tear-drop shaped pool.

---

Built on [Cubik](#)  
© Martin House 2012

Company Number: 2016332 | Registered Charity Number: 517919 | V.A.T. Number: 686 5694 67